

MODEL NUMBERS (for Load Cell & Platform)

54-DR30TB (3,000 Lbs.)	54" x 54" x 3-1/4"
54-DR40TB (4,000 Lbs.)	54" x 54" x 3-1/4"
54-DR50TB (5,000 Lbs.)	54" x 54" x 3-1/4"
54-DR60TB (6,000 Lbs.)	54" x 54" x 3-1/4"
60-DR30TB (3,000 Lbs.)	60" x 60" x 3-1/4"
60-DR40TB (4,000 Lbs.)	60" x 60" x 3-1/4"
60-DR50TB (5,000 Lbs.)	60" x 60" x 3-1/4"
60-DR60TB (6,000 Lbs.)	60" x 60" x 3-1/4"

Other Models: _____

(For stainless steel platform add "S" to end of model no.)

MODEL NUMBER (for SOLO 1000 Indicator)

SR-1000-1	1-Channel SOLO 1000 Indicator
SR-1000-2	2-Channel SOLO 1000 Indicator

SUBMITTAL DATA:

Qty	Platform Model No.	Cable Length	Display Increments

Solo Indicator Model No. _____

4-20mA Per Channel _____

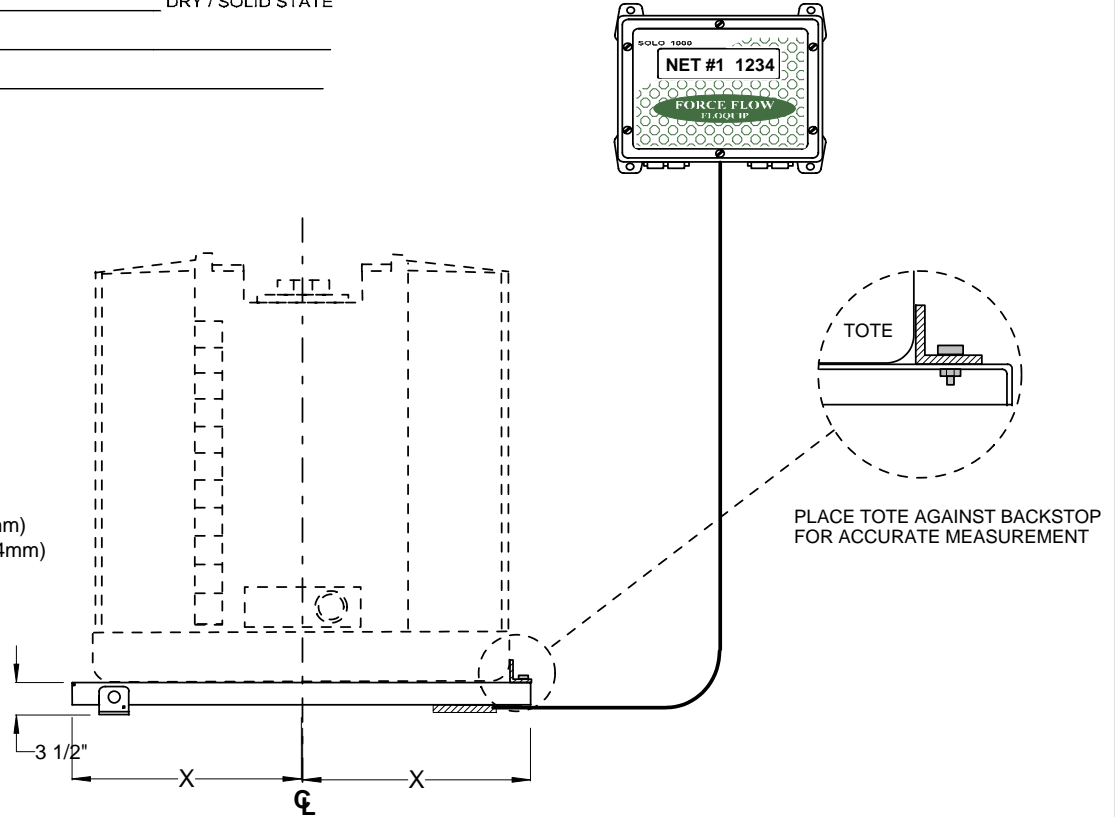
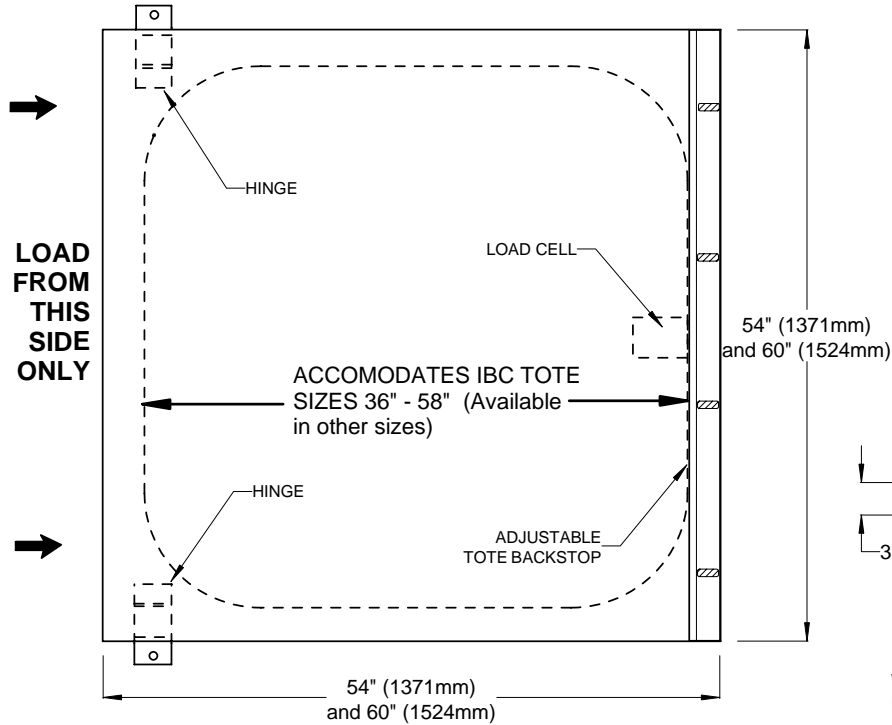
Relays Per Channel _____ DRY / SOLID STATE

Other Options: _____

TOTE
Application
Only

IMPORTANT !

**FOR ACCURATE MEASUREMENT, ADJUST BACKSTOP
SO TOTE IS CENTERED ON PLATFORM.**



INSTALLATION NOTE:

We recommend using a forklift to load/unload totes.
If a pallet jack is to be used, scale platform must be pit mounted so deck is flush with floor surface.
Surface mounting with use of inclined load ramps is NOT RECOMMENDED.

S.1.105



1150-D Burnett Ave, Concord, CA 94520 USA
1-800-893-6723 US & Canada, Fax: 925-686-6713
www.forceflow.com / info@forceflow.com

File: T4\O&M\CHEMSOLO\SOCHTOTE.tcw (D13.pdf) (WEB: CHMSOTOT.pdf)
EMAIL/DRAWINGS/CHEM/SOCHTOTE.pdf

**ELECTRONIC LOW PROFILE CHEM-SCALE
with SOLO 1000 INDICATOR
for IBC TOTE BINS**

Drawn by: SLP/MT
Date: 09/18/95
Revised: 07/15/05 MT
Scale: NONE

Drawing Number
30287