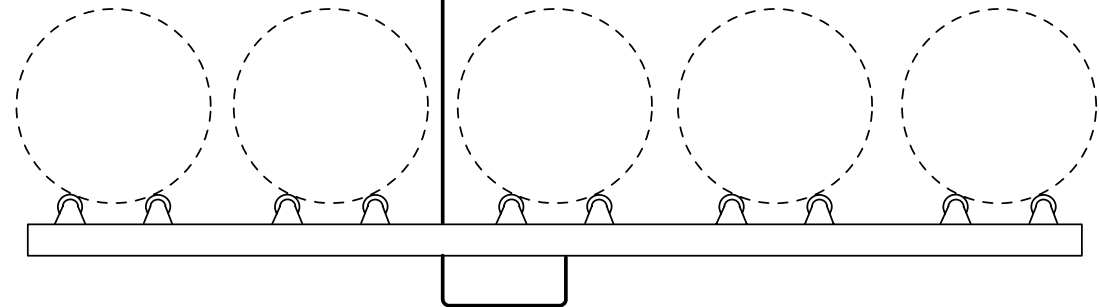


\_\_\_\_\_ Model Number of Indicator (Lbs or Kgs \_\_\_\_\_)

\_\_\_\_\_ Model Number of Scale Frame

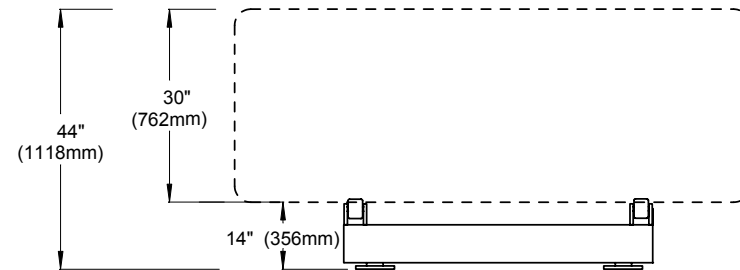
\_\_\_\_\_ Feet of Cable (20 feet/6M Std)



NOTE: Use 5/8" x 1-1/2" (16mm x 38mm) Anchor Bolts

RECOMMENDATION: 12" (305mm) minimum pad be used for each foot. DO NOT PREPOUR ANCHOR BOLTS. Use frame as template to avoid binding.

<b>MODEL NUMBERS (for Frame &amp; Load Cell)</b>	
DR200	(20,000 lbs)
DR100K	(10,000 kgs)
<b>MODEL NUMBER (for SOLO 1000 Indicator)</b>	
SR000-1	1-Channel
SR000-2	2-Channel



WEIGHT: 1890 lbs/857 kgs (palettized for shipment)

S.1.133



1150-D Burnett Ave, Concord, CA 94520 USA  
 1-800-893-6723 US & Canada, Fax: 925-686-6713  
 www.forceflow.com / info@forceflow.com

**ELECTRONIC 5-TANK SCALE**  
**CHLOR-SCALE with SOLO 1000 INDICATOR**  
 (20,000 lb. or 10,000 kg. Capacity)

Drawn by: SLP  
 Date: 09/01/95  
 Revised: 05/09/02  
 Scale: NONE

Drawing Number  
**30294**