

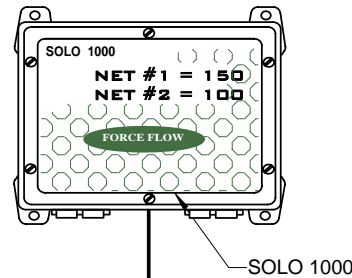
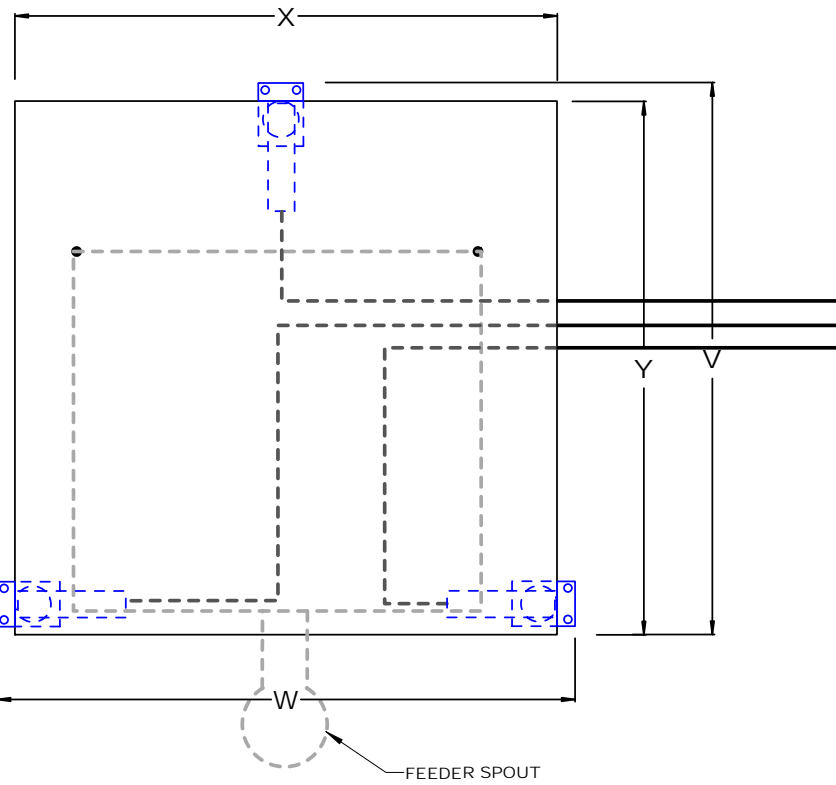
PLATFORM MODEL NO:	Metric Model:	W	X	Y	Z
27-DR10VF-HA3 (1000 lbs)	27-DR5KVF-HA3 (500 kg)	31.50"	27.5"	27.5"	2.00"
30-DR10VF-HA3 (1000 lbs)	30-DR5KVF-HA3 (500 kg)	34.25"	30"	30"	3.25"
30-DR20VF-HA3 (2000 lbs)	30-DR10KVF-HA3 (1000 kg)	34.25"	30"	30"	3.25"
30-DR30VF-HA3 (3000 lbs)	30-DR15KVF-HA3 (1500 kg)	34.25"	30"	30"	3.25"
40-DR15VF-HA3 (1500 lbs)					
50-DR15VF-HA3 (1500 lbs)					
60-DR15VF-HA3 (1500 lbs)					

Consult Factory for 4 Load Cell Models

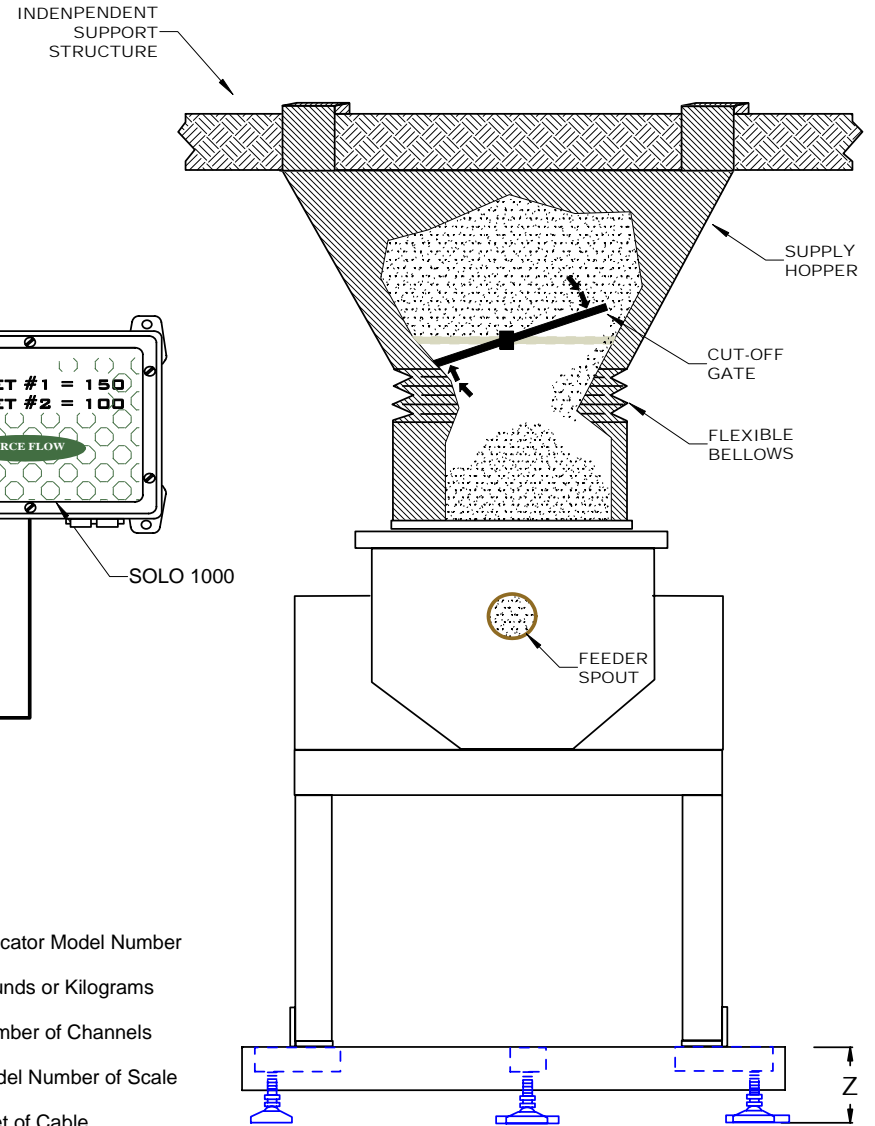
**\* PROVIDE FACTORY WITH FEEDER STAND FOOTPRINT FOR MOUNTING HOLE PLACEMENT**

**SOLO 1000 Indicator:**

- SR1000-1 (1-Channel Indicator)
- SR1000-2 (2-Channel Indicator)



- Indicator Model Number
- Pounds or Kilograms
- Number of Channels
- Model Number of Scale
- Feet of Cable
- Feeder Model Number



PROVIDE FACTORY WITH FEEDER STAND DIMENSIONS FOR MOUNTING HOLE PLACEMENT.

S.1.101



1150-D Burnett Ave, Concord, CA 94520 USA  
 1-800-893-6723 US & Canada, Fax: 925-686-6713  
[www.forceflow.com](http://www.forceflow.com) / [info@forceflow.com](mailto:info@forceflow.com)

File: T4\O&M\FV\FVSOLO\VF HA SOLO\VF HA SOLO.tcw (VFSOL.pdf) (WEB: VFSOLO.pdf)  
 EMAIL/DRAWINGS/VF/VFHASOLO.pdf

**VOLUMETRIC FEEDER SCALE  
with SOLO 1000 INDICATOR**

Drawn by: SLP/MN  
 Date: 10/08/99  
 Revised: 08/31/04 MN  
 Scale: NONE

Drawing Number  
**30633**